

Rezistente electrice tip carcasa

Tip/Type RK220, RK210

Aplicatii:

Incalzirea utilajelor si matritelor in industria prelucrarii maselor plastice si aplicatii similare.

Constructie:

Sarma rezistenta in izolatia speciala de nica, incastrat in tabla de aliaj de nichelina si otel cu placa de strangere cu grosimea de 8,0 mm, lacuit, cu margine de protectie si izolatia cu grosimea de 2,0 mm fixata prin intermediul suruburilor M8 si a piulitelor.

Modele:

Latimi standard:

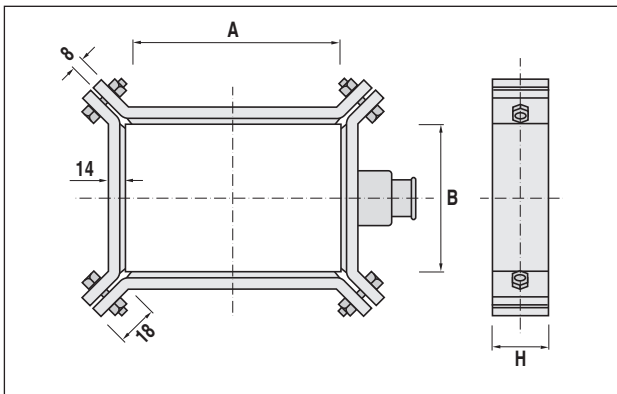
20,25,30,35,40,45,50,60,70,75,80,90,100 mm etc.

Sunt disponibile cu gauri, cu piese de fixare pentru termocuple si cu decupari cu conditia ca dimensiunile sa permita.

- Conectarea alimentarii cu prize, cutie de borne sau cabluri montate.
- Deasemenea disponibile cu placi de alama conductoare de caldura.
(Pentru aplicatii speciale care necesita temperaturi mai ridicate, sunt disponibile cu izolatii ceramice tip RK 210)

Important:

Va rugam sa retineti observatiile referitoare la asamblare, care sunt prezentate pe pagina 1.22.



Frame Heaters

Application:

Heating of tools and moulds in the plastic processing industry and similar applicatons.

Construction:

Resistance wire in special micranite insulation, encased in nickel alloy steel sheet with 8,0 mm thick clamping plate, laquered, with edge protection and 2,0 mm thick insulation clamped by means of M8 screws and nuts.

Models:

Standard Widths:

20,25,30,35,40,45,50,60,70,75,80,90,100 mm etc.

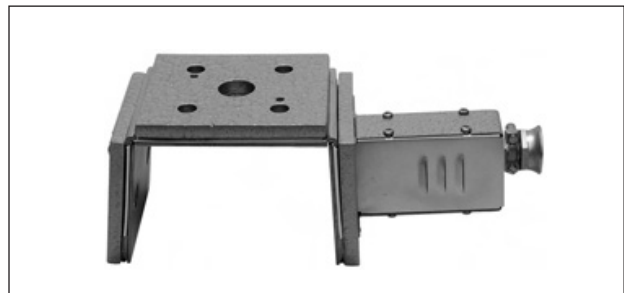
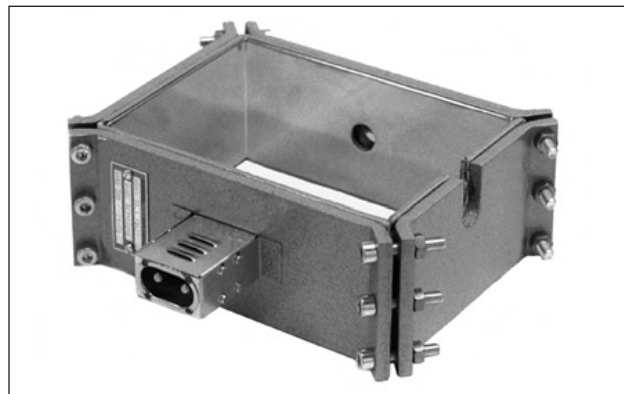
Available with holes, thermocouple bridges and cut outs provided that the measurements permit.

- Power connection via plug socket, terminal box or securely mounted cable.
- Available also with brass heat conductor plates.

(For special applications requiring higher temperatures, available in ceramic insulation as type RK 210)

Important:

Please note the remarks concerning assembly, which are given on page 1.22.



Nr. / No.		RK220	RK210
Alimentarea: Main supply:		la cerere as required	
max T: max T:	°C	350	420
Grosimea rezistentei: Thickness of heater:	mm	~ 19,0	
Densitatea de putere: Heating - power:	W/cm ²	max.: 3,5	max.: 7,0