

Elemente de marcare

INFO

Elementele de marcare tip WEMA, **S2160/...** si **S2161/...** sunt unice din cauza modului ingenios de interschimbare la linia de despartire.

Insertiile interschimbabile pot fi prelucrate cu litere si contur. Utilizat de preferinta in matrite de injectie, in stante si in matrite pentru suflare.

Constructia compacta a elementelor de marcare permite montarea multipla, dar schimbarea insertiilor separate este intotdeauna posibila. Aplicarea multipla al acestor elemente ofera avantaje majore. In curs de brevetare.

Caracteristici:

- Timpi de nefunctionare a productiei reduse din cauza inlocuirii rapide a insertiilor pe masina.
- Interschimbarea insertiilor usoare, folosind instrumentele de montare.
- Fara semne de fixare aditionale.
- Constructie compacta.
- Pot fi introduse elemente de marcare atat cele singulare cat si cele multiple (se alatura in secventa).
- Disponibil ca o unitate de marcare completa **S2160/S2161** sau ca insertii interschimbabile **S2162/S2163**.
- Varietate mare de aplicatii:
Proiectarea literelor reliefate sau incastrate
Suprafata de insertie poate fi modelata liber
- Canalele de curgere pot fi deschise sau blocate

Marking Units

INFO

The WEMA-Marking Units **S2160/...** and **S2161/...** are unique due to its ingenious way of interchange ability from the parting line.

The interchangeable insert can be machined with lettering and contour. Preferably used in injection-, die cast-, compression- and blow moulds. The compact design of marking units allows for multiple fitting, but separate changing of single inserts is always possible.

The multi-purpose application of these units is another major advantage. Patent pending.

Features:

- Less production downtimes due to quick replacing of insert on the machine.
- Easy exchanging of inserts using mounting tool.
- No additional fixing marks.
- Compact design.
- Both single- and multiple fitting (join in sequence) of marking inserts is possible.
- Available as complete marking units **S2160/S2161** or interchangeable inserts **S2162/S2163**.
- Great variety of applications:
Lettering as raised or recessed design
Surface of insert can be shaped as required
- Runners can be opened or blocked

Exemple de etichetare:

Examples of lettering:

Tipuri de materiale

>PA6 GF30<

Type of plastics

Coduri pentru reciclare
si adecvat pentru alimente



Codes for recycling-
and food suitable

Nr. schimb

3. Schicht 7/2009

Shift No.

Saptamana
An

KW38

2009

Week
Year

Nr. Produs
Nr. Client

Nr. 090812W

Part No.
Customer No.

Logoul firmei

WEMA.gmbh

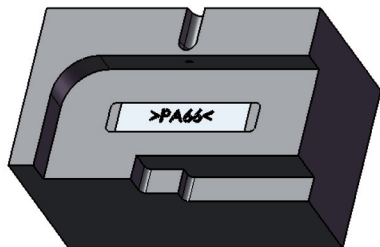
Company logo

Elemente de marcare
INFO

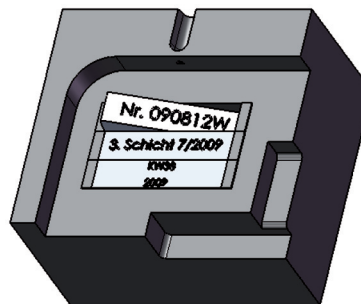
Marking Units
INFO

Exemple de aplicatii:

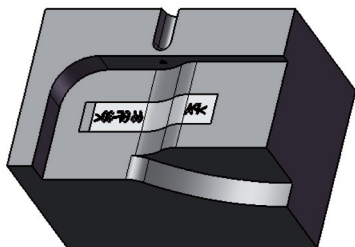
Application examples:



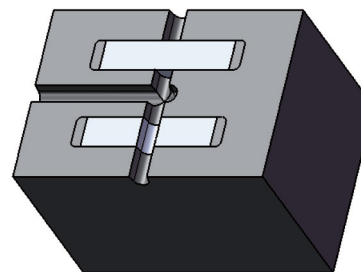
Insertie singurara
Litere reliefate sau incastrate
Single fitting
Lettering raised or recessed



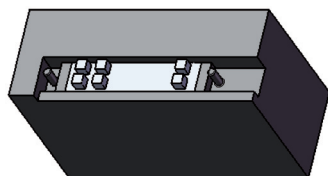
Insertii multiple
Litere reliefate sau incastrate
Multiple fitting
Lettering raised or recessed



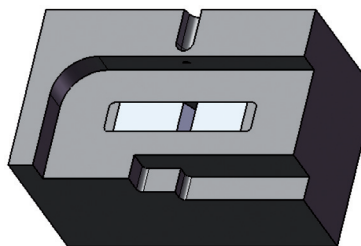
Montare in
suprafata profilata
Mounting into
shaped surface



Caile de curgere
deschise sau blocate
Runners
opened or blocked



Contur ridicat
(ex. la deschideri)
Raised contours
(e.g. openings)



Contur incastrat
Recessed contour



Pentru marcare sau etichetarea suprafetelor mari

For large-area marking or labelling

De retinut:
Constructii sau forme speciale conform specificatiilor dvs. pot fi livrate in scurt timp!
Va rugam sa ne contactati.
Insertii cu marcare conform specificatiilor dvs. pot fi furnizate in scurt timp!

Please note:
Special designs or shapes according to your specifications can be delivered shortly!
Please contact us.
Inserts with marking according to your specifications can be supplied shortly!

Elemente de marcare

INFO

Instructiuni de instalare:

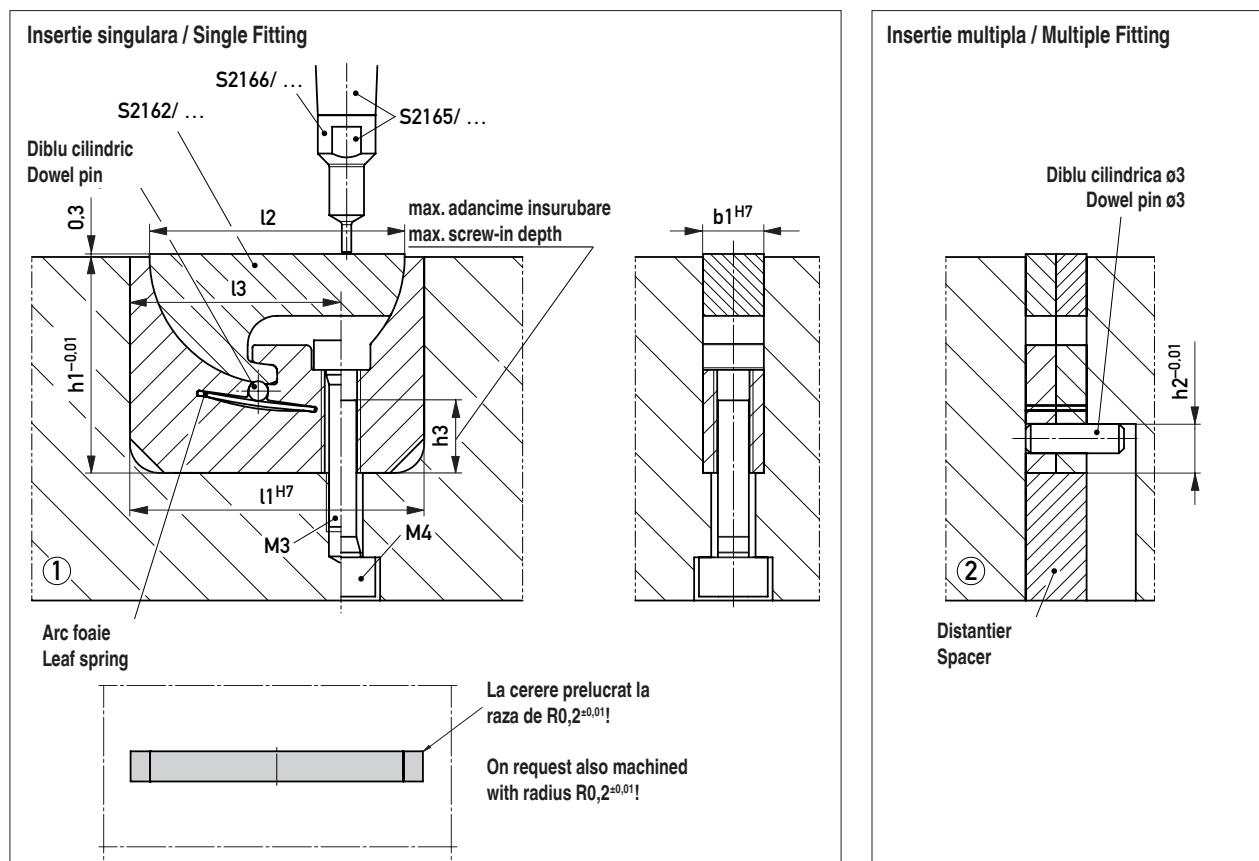
- La crearea locatiilor, dimensiunile l1, b1 si h1 trebuie respectate cu strictete. (Fig. ①)
- Pentru montarea insertiei singulare, este recomandata o raza exterioara de 1,5 mm (4x).
- Elementul de marcare poate fi fixata de la linia de despartire (M3) sau cu un surub (M4) de dedesubt. (Fig. ①)
- Pentru montarea insertiilor multiple, diferite carcase sunt legate prin intermediul unui diblu de $\varnothing 3$ mm. Trebuie introdus un distantier care serveste ca suport. (Fig. ②)
- Este important ca zona de demontare sa fie fixata conform standardelor in-house (ex. partea de deschidere este intotdeauna la sfarsitul literei).
- Trebuie sa se asigure ca duza nu este pozitionata vizavi de unitatea de marcaj.
- Insertia interschimbabila **S2162/ ...** va fi instalata cu o miscare circulara. Pozitia finala este atinsa imediat ce diblul de blocare cu arc intra in gaura de blocare. (Fig. ①)
- Demontarea se realizeaza cu instrumentul de montare cu actionare manuala **S2165/ ...**

Marking Units

INFO

Fitting instructions:

- When machining pocket, the dimensions l1, b1 and h1 must be strictly observed. (Fig. ①)
- For single fitting an outer radius of 1,5 mm (4x) is recommended.
- The marking unit can either be fixed from the parting line (M3) or with a M4-screw from underneath. (Fig. ①)
- For multiple fitting the various housings are linked by means of a dowel pin, Dia. 3 mm. A spacer which serves as support must be inserted. (Fig. ②)
- It is important that the dismantling area is fixed according to in-house standards (e.g. the opening side is always at the lettering end).
- It must be ensured, that the gate is not positioned just opposite to the marking unit.
- The interchangeable insert **S2162/...** will be installed by doing a circular movement. Final position is reached as soon as the nose interlocks with spring loaded dowel pin. (Fig. ①)
- Dismantling is done with hand-operated mounting tool **S2165/...**



= Nou / New

Insertii interschimbabile Interchangeable Insert	b1	d2	h1	h2	h3 max.	l1	l2	l3	Nr. / No.
S2162/ 8x3,1	3,1	-	14	5	-	12	8	-	S2160/ 8x3,1
12x3,1		-	-		-	16	12	-	12x3,1
16x3,1		-	16		-	20	16	-	16x3,1
26x3,1		-	22		-	30	26	-	26x3,1
S2162/ 26x6,2	6,2	M4	22	-	10	30	26	21,5	S2160/ 26x6,2
52x12,4	12,4	M6	38	-	12	58	52	42	52x12,4
S2163/ 52x66,8	66,8	M6	38	-	12	58	52	42	S2161/ 52x66,8
52x121,2	121,2								52x121,2
52x175,6	175,6								52x175,6