

## Blocuri de glisare pentru matrite

### INFO

Noile blocuri de glisare pentru matrite WEMA sunt special concepute pentru matrite de injectie si compresie. Avand in vedere ca blocurile sunt precis ghidate de coloane, utilizarea in mod normal a coloanelor de ghidare externe este eliminata. Deosebit de potrivite pentru matrite mici!

#### Caracteristici:

- Recomandate pentru montarea in spatii inguste, deoarece nu necesita ghidare externa.
- Gama de latimi a blocurilor de glisare sunt de la 20 pana 220 mm.
- Ghidare precisa a blocurilor de glisare datorita tolerantelor mici.
- Pentru o durata de viata marita se poate cere acoperirea suprafetei cu un strat anti-frecare pentru coloanele de glisare.
- Curse extinse ale blocurilor de glisare sunt posibile.
- Blocurile de glisare sunt disponibile cu ghidare simpla sau dubla.
- In functie de constructie pot fi aplicate piese de retinere interne sau externe.
- Conectari standardizate pentru cilindrii hidraulici.
- Sistem versatil.

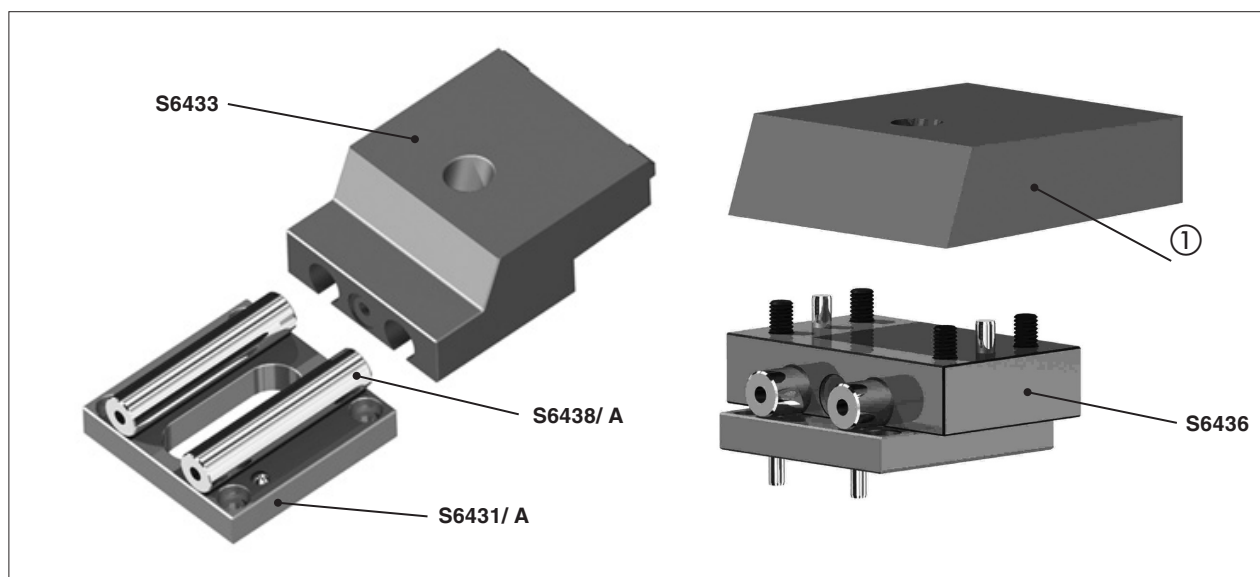
## Mould Slide Units

### INFO

The new WEMA-Mould Slide Units are specially designed for Injection- and compression moulds. Since the slides are precisely guided by pillars, normally used outer guide bars are eliminated. Particularly suitable for small moulds!

#### Features:

- Recommended for space saving mounting, because external guides are not needed.
- Slide widths range from 20 up to 220 mm.
- Precise guiding of slides due to tight tolerances.
- Antifriction surface coating of guide pillars for long service life (on request).
- Extended slide strokes are possible.
- Slide units are available either with single or double guiding.
- Depending on design, internal or external slide retainers can be applied.
- Standardized connection to hydraulic cylinders.
- Versatile mould slide system.



#### Caracteristici de baza:

- Blocurile de glisare **S6433** sunt disponibile cu ghidare simpla sau dubla
- Producatorul de matrita trebuie doar sa prelucreze unghiul de inchidere si conturul cavitatii. Placa de ghidare **S6431/ A** este prelucrata cu tolerante mici si niturata. Aceasta este insurubata si fixata pe placa matritei.
- Coloanele de ghidare **S6438/ A**, sunt slefuite si niturate, sunt fixate pe placa de ghidare cu suruburi si dibluri.
- Sunt disponibile coloane prelungite pentru piesele de retinere pozitionate exterior oferind deasemenea o cale de glisare mai lunga. Ele pot fi scurtate pentru a se potrivi la cerintele de proiectare.
- Placa de sustinere **S6436** este de asemenea prelucrata. Aceasta este utilizat in cazul in care blocurile de glisare ① potrivit cerintelor de proiectare propriu (alte dimensiuni sau materiale) trebuie sa fie montate.

**Sistemul de ghidare incorporat face ca barele laterale de ghidare sa para inechitate!**

**Un avantaj considerabil mai ales a la matritele cu dimensiuni reduce!**

#### Basic characteristics:

- Slides **S6433** are available with single or double guiding.
- Mould maker only has to machine the locking angle and cavity contour. Guide plate **S6431/ A** is finished machined with tight tolerances and nitrided. It is screwed and doweled to the mould plate.
- Guide pillars **S6438/ A** are ground and nitrided, they are fixed to the guide plate by screws and dowels.
- Pillars also available as extended type for externally positioned slide retainer, also providing for longer slide ways. They can be shortened to suit design requirements.
- Slide carrier plate **S6436** is also finished machined. It is used in case that slides ① according to own design requirements (other sizes or material) have to be mounted.

**The built-in guiding system makes lateral guide bars obsolete!**

**A considerable advantage especially in small moulds!**

## Bloc glisare matrita

### INFO

#### Instructiuni de aplicare:

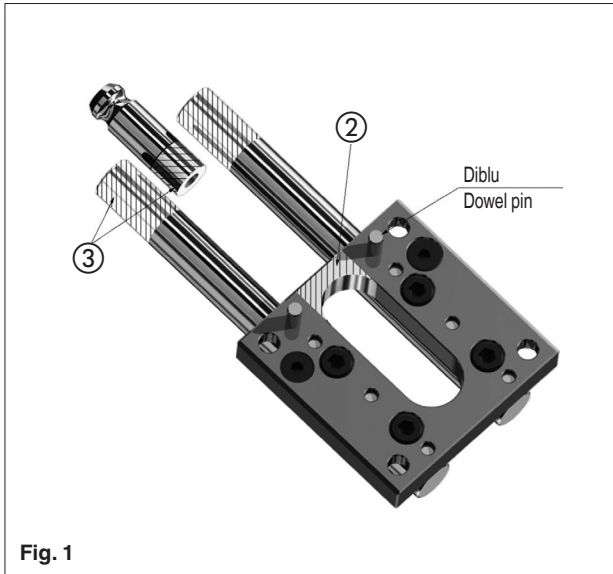


Fig. 1

**Fig. 1**  
Pentru a satisface cerintele de proiectare, deschizatura ② in placa de baza poate fi deschisa.

**Important!** In acest caz este absolut necesar sa se fixeze placa de baza la matrita in scopul de a mentine conditia de buna functionare.

Coloana de ghidare lunga si boltul de retinere ③ pot fi de asemenea scurtate dupa cerinte.

#### Fig. 2

Pentru scopuri de punctare cu blocurile de ghidare simpla clema de locatie **S6444** trebuie sa fie folosita in pozitie verticala. Este necesar folosirea coloanei de ghidare, model lung (**S6437/B**).

## Mould Slide Units

### INFO

#### Application instructions:

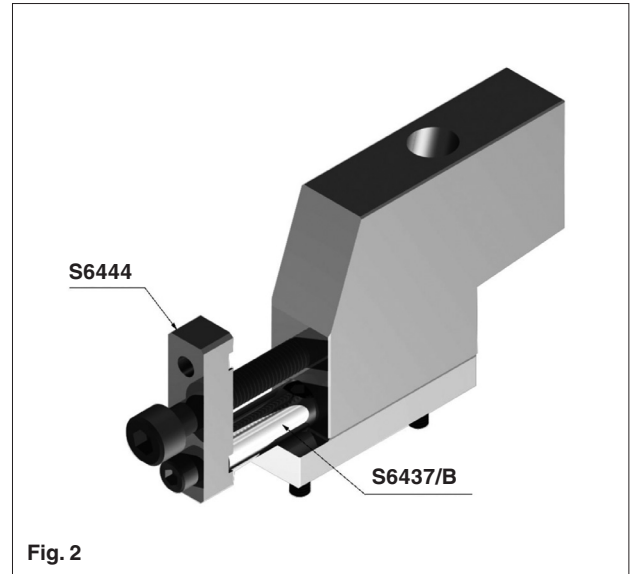


Fig. 2

**Fig. 1**  
To satisfy design requirements slot ② in base plate can be opened.

**Important!** In this case it is absolute necessary to dowel base plate to the mould, in order to retain proper working conditions.

The long type guide pillars and retaining bolt ③ can also be shortened as required.

#### Fig. 2

For spotting purposes of slides with single guides, the spotting bracket **S6444** must be used in upright position. It is necessary to have guide pillar, long design (**S6437/B**) mounted.

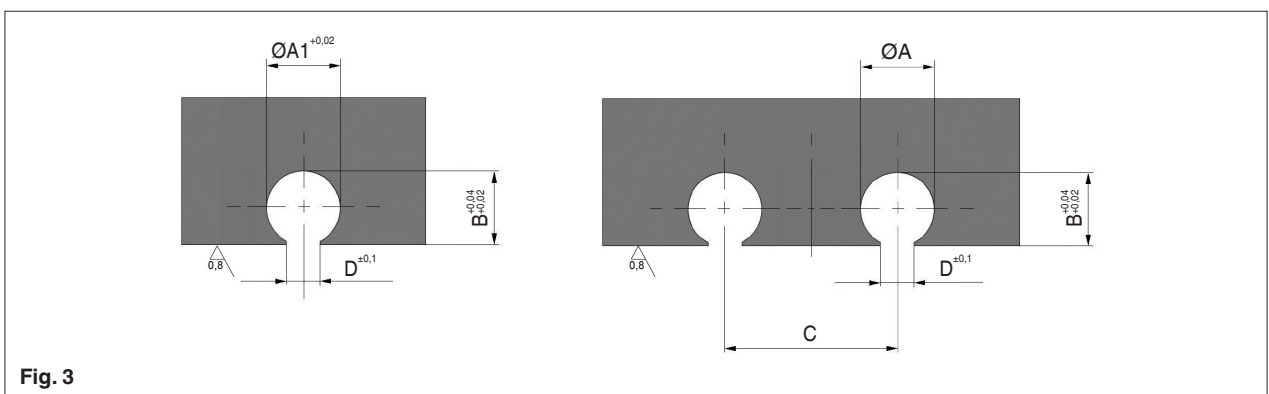


Fig. 3

Tip	A	A1	B	C	D
12	12,08 <sup>+0.02</sup>	12,04	12	30	5,5
20	20,10 <sup>+0.05</sup>	-	20	48	8,5
30	30,15 <sup>+0.05</sup>	-	30	64	10,5

#### Fig. 3

Pentru fabricarea proprie a blocurilor de glisare speciale sau a placilor de baza va rugam sa respectati indicatiile din tabelul mai sus.

#### Fig. 3

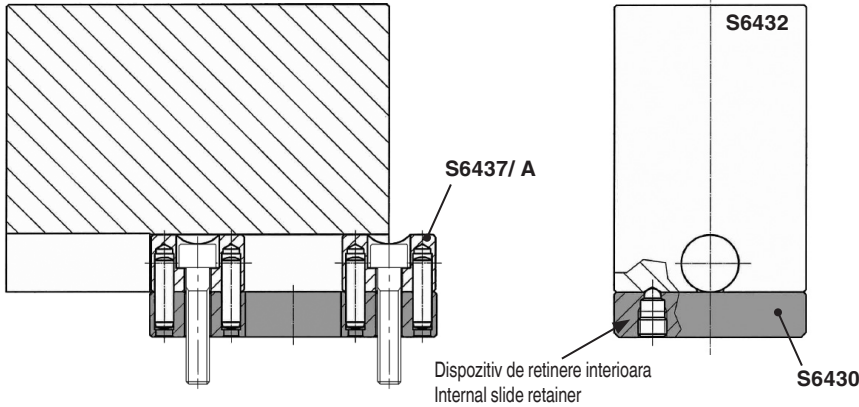
For in-house manufacturing of special slides or slide base plates, please observe the dimensions indicated in table above.

## Bloc glisare matrita

### INFO

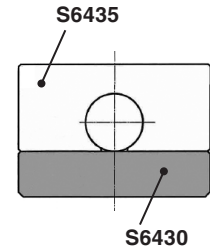
Componente individuale  
pentru blocurile de glisare a matritelor:

Bloc glisare matrita cu ghidare simpla  
Slide single guiding

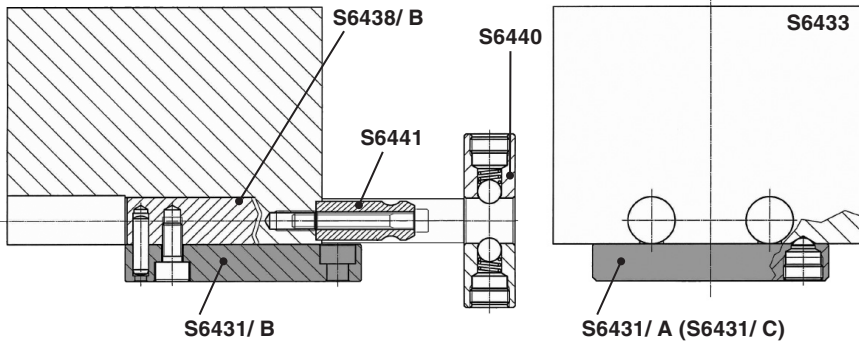


Placa de baza a blocului de  
glisare, ghidare simpla

Slide baseplate,  
single guiding



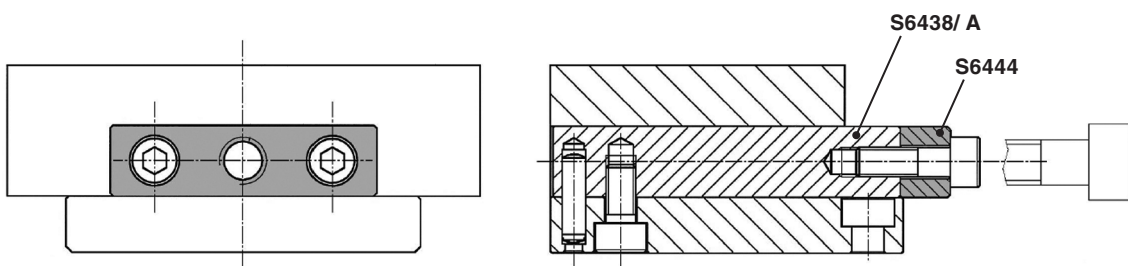
Bloc glisare matrita cu ghidare dubla  
Slide double guiding



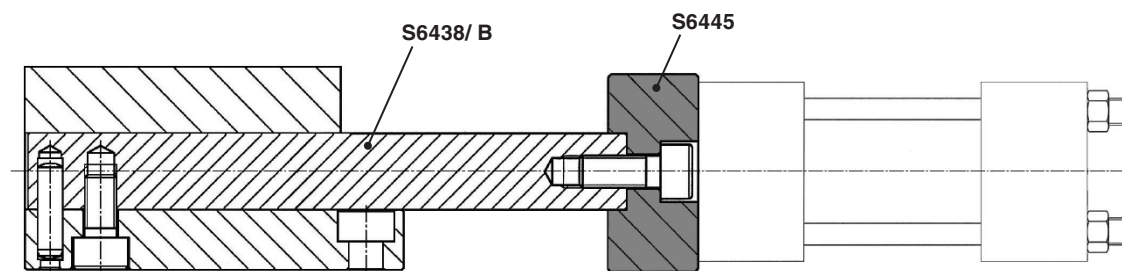
Placa de baza a blocului de  
glisare, ghidare dubla

Slide baseplate,  
double guiding  
S6436

Clema de locatie cu ghidare dubla  
Spotting bracket, with slide double guiding



Flansa pentru montarea cilindrilor hidraulici  
Hydraulic cylinder flange for mounting with hydraulic cylinder



## Bloc glisare matrita

### INFO

#### Lista de piese:

Nr./No.	Denumire	Designation	Material
S6430	Placa de baza,ghidare simpla	Baseplate,single guiding	Otel scula/Tool steel
S6431/A	Placa de baza,ghidare dubla, cu dispozitiv de retinere	Baseplate,double guiding,with retainer	Otel scula/Tool steel
S6431/B	Placa de baza,ghidare dubla, fara dispozitiv de retinere	Baseplate,double guiding,without retainer	Otel scula/Tool steel
S6431/C	Placa de baza,ghidare dubla,cu dispozitiv de retinere cu role	Baseplate,double guiding,roller retainer	Otel scula/Tool steel
S6432	Bloc glisare matrita, ghidare simpla	Mould slide, single guiding	1.2312
S6433	Bloc glisare matrita, ghidare dubla	Mould slide, double guiding	1.2312
S6435	Placa de baza a blocului de glisare, ghidare simpla	Slide baseplate,single guiding	1.7225
S6436	Placa de baza a blocului de glisare, ghidare dubla	Slide baseplate,double guiding	1.7225
S6437/A	Coloana de ghidare, ghidare simpla	Guide pillar,single guiding	1.7225
S6437/B	Coloana de ghidare,model lung, ghidare simpla	Guide pillar,long design,single guiding	1.7225
S6438/A	Coloana de ghidare, ghidare dubla	Guide pillar, double guiding	1.7225
S6438/B	Coloana de ghidare, model lung, ghidare dubla	Guide pillar, long design,double guiding	1.7225
S6440	Dispozitiv de retinere, extern	Slide retainer, external	1.7225
S6441	Bolt de retinere	Retaining bolt	1.7225
S6444	Clema de locatie	Spotting bracket	1.1191
S6445	Flansa pentru cilindri hidraulici	Hydraulic cylinder flunge	1.1191

## Mould Slide Units

### INFO

#### Parts list:

## Placa de baza, ghidare simpla

## Baseplate, Single Guiding

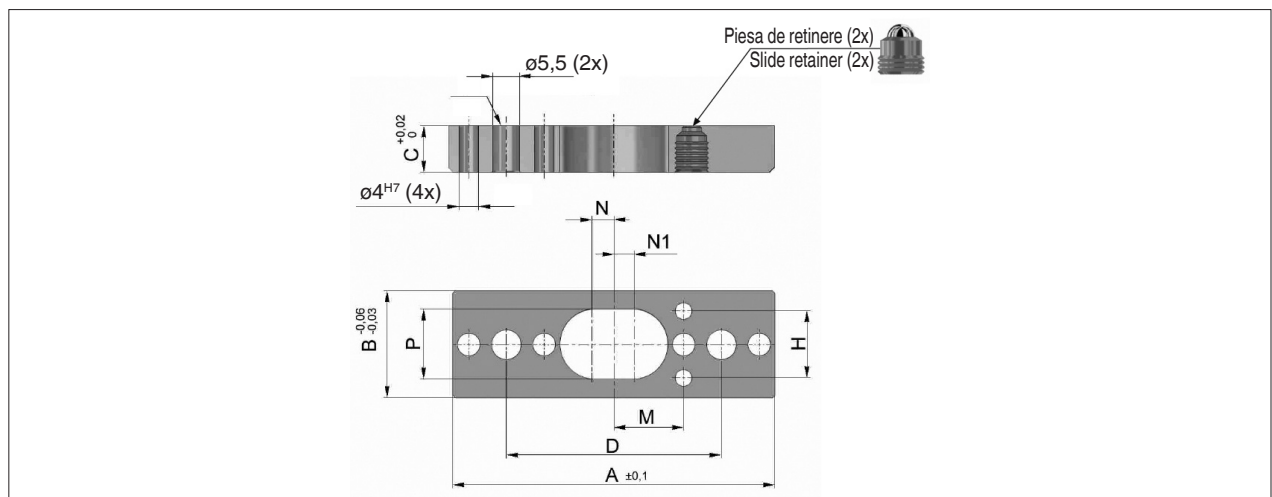
### S6430/ ...

Material/Duritate: Otel scula / 430 HV0.5  
Adancime nitrura: 0,3 mm

Material/Hardness: Tool steel / 430 HV0.5  
Nitriding depth: 0,3 mm

Suruburile, diblurile si arcurile de piston sunt incluse in pachet.

Screws, dowels and spring plungers are included in delivery.



A	B	C	D	H	K [kg]	L	M	N	N1	P	Nr. / No.
60	20	9,5	40	12	2	4	13	3,5	3,5	13	S6430/ 60x20x9,5
	40			5	40x9,5						

K = sarcina maxima / maximum load

La cerere S6430/ ... poate fi livrat si cu tratare la suprafata.

On request S6430/ ... can be supplied with surface coating.