

**Repartizor de flux cu rotatie,
2 compartimente/4 compartimente**

INFO

S6480/ ... (DR- ...2)

2 compartimente

S6481/ ... (DR- ...4)

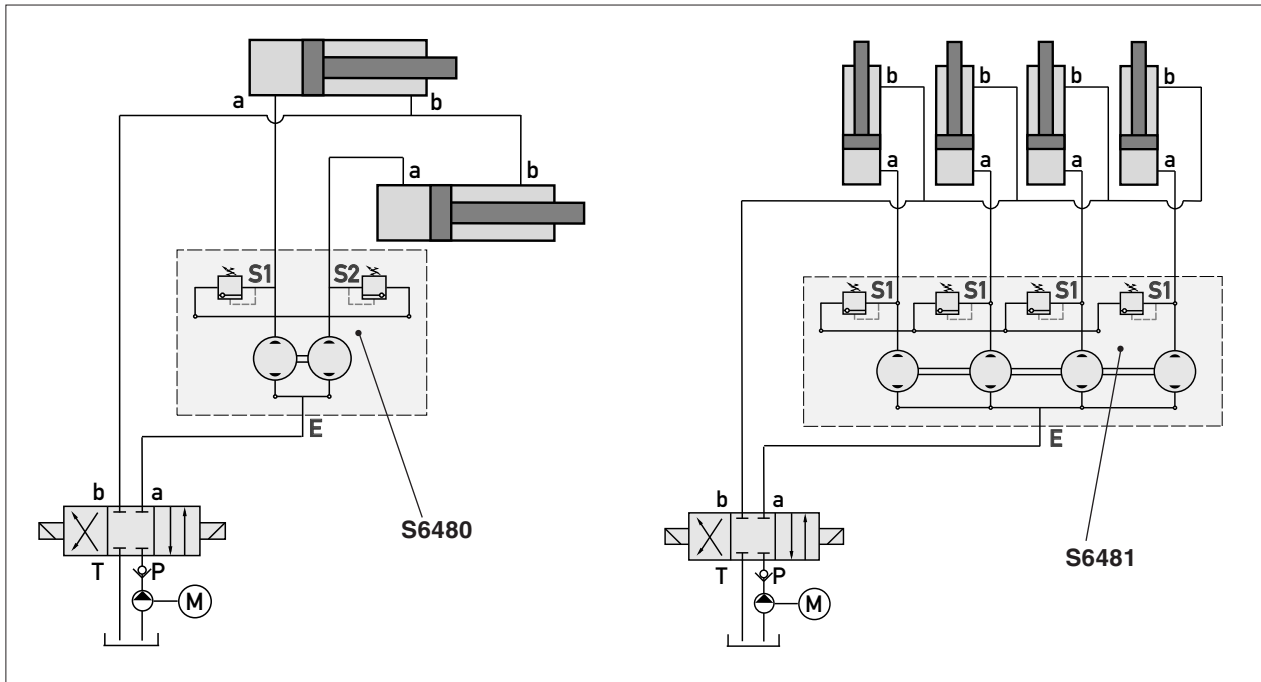
4 compartimente

**Rotating Flow Divider,
2-fold/4-fold**

INFO

2-fold

4-fold



Repartizoarele de flux cu rotatie **S6480** si **S6481** sunt concepute pentru a permite o alimentare sincronizata exacta pentru cilindrii hidraulici cu actionare simpla sau dubla.

Ambele angrenaje sunt legate de un ax comun. Ele se rotesc la aceleasi viteza si rata de divizare a debitului este exact proportionala la deplasarea, in fiecare camera a cilindrului.

Fiecare transmisie este echipata cu valva de presiune de descarcare destinata pentru:

- Protejarea divizoarele de debit in caz de bruijaj mecanic.
- Compensarea pentru posibile abateri inferioare si superioare ale pozitiei de capat a cilindrului, pentru a evita cumulara diferentelor de curse.

- Presiunea initiala: max. 210 bar
- Conectare port: G 1/2"
- Valva de presiune reglabila, de joasa presiune reversibila, fara scurgere externa.

Rotating flow dividers **S6480** and **S6481** are designed to enable an exact synchronized feeding of two or four single-acting or double-acting hydraulic cylinders.

Both gearings are linked by a common axle. They rotate at the same speed and the flow split rate is precisely proportional to the displacement in each cylinder chamber.

Each gearing is equipped with pressure relief valves designed to:

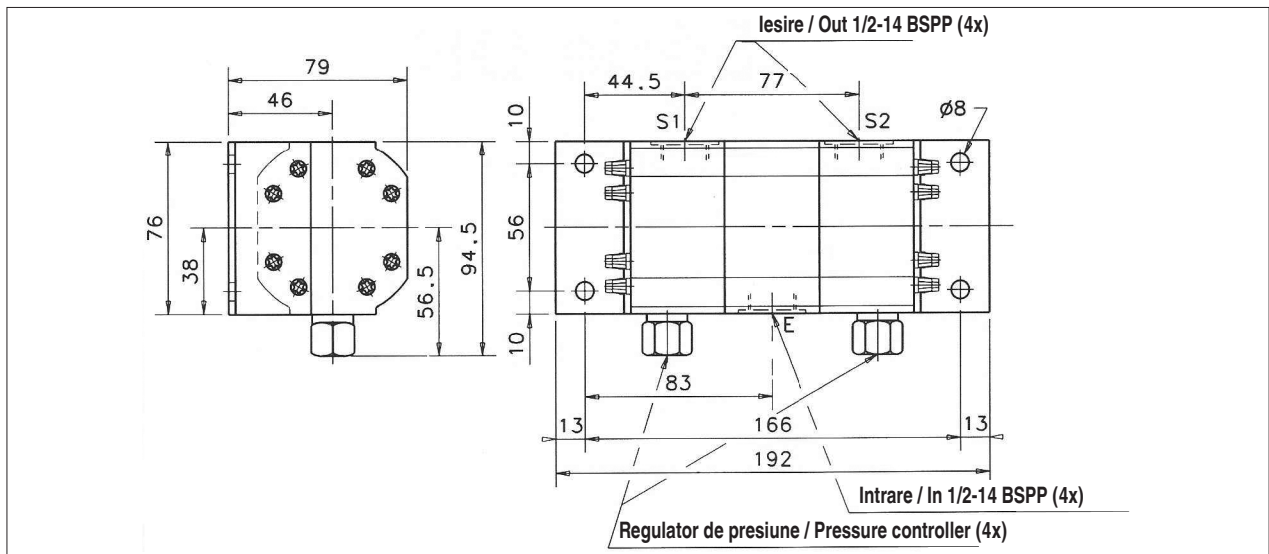
- Protect the flow dividers in case of mechanical jamming.
- Compensate for possible deviations at lower and upper end positions of the cylinders to avoid cumulated stroke differences.

- Initial pressure max. 210 bar
- Port connection: G 1/2"
- Adjustable pressure relief valve, low pressure reversible, no external drain.

Repartizor de flux cu rotatie,
2 compartimente/4 compartimente

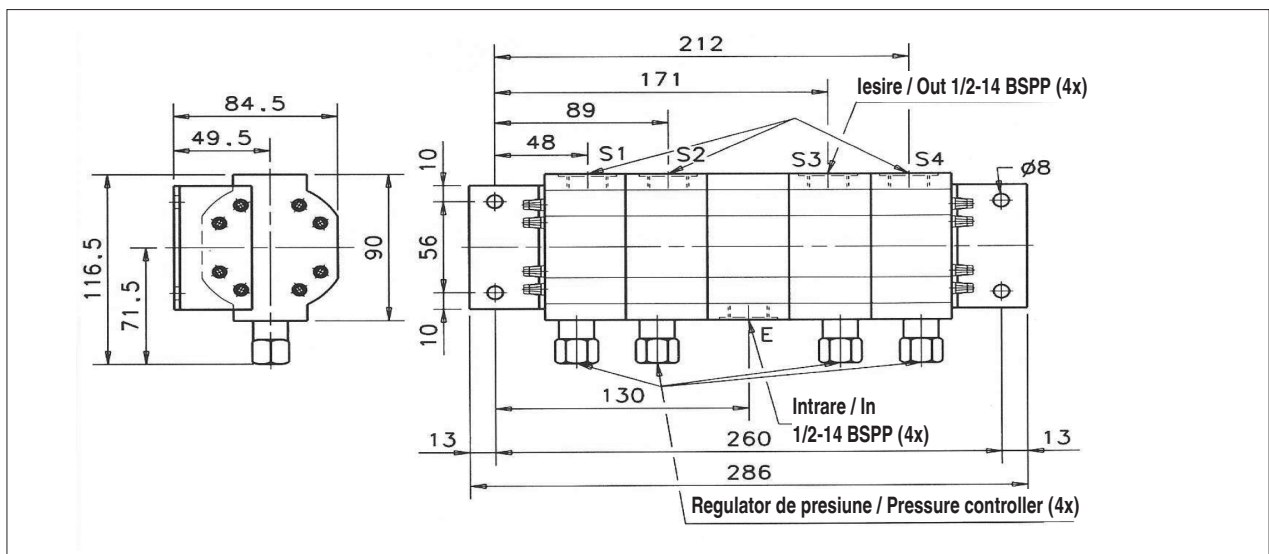
Rotating Flow Divider,
2-fold/4-fold

S6480/ ... (DR- ...2)



Volum de stramutare Displaced volume [cm ³ /U]	Presiunea maxima Extreme pressure [bar]	Viteza de rotatie Speed of rotation [U/min.]	Rata de descarcare Discharge rate		Nr. / No.
			E	S	
2 x 2,11	210	min. 1500 max. 4500	6 l/min	3 l/min	S6480/ 1
			18 l/min	9 l/min	
2 x 4,23	210	min. 1500 max. 4500	12 l/min	6 l/min	S6480/ 2
			38 l/min	19 l/min	

S6481/ ... (DR- ...4)



Volum de stramutare Displaced volume [cm ³ /U]	Presiunea maxima Extreme pressure [bar]	Viteza de rotatie Speed of rotation [U/min.]	Rata de descarcare Discharge rate		Nr. / No.
			E	S	
4 x 2,11	210	min. 1500 max. 4500	12 l/min	3 l/min	S6481/ 1
			36 l/min	9 l/min	
4 x 4,23	210	min. 1500 max. 4500	24 l/min	6 l/min	S6481/ 2
			76 l/min	19 l/min	