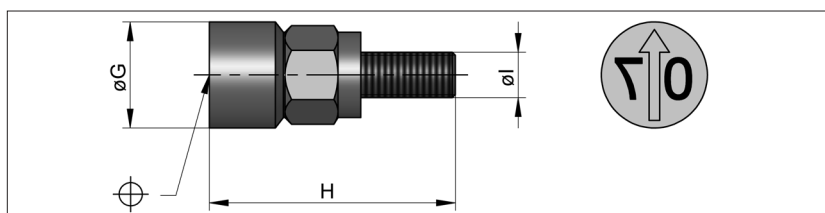


Insertie sageata, An

Arrow Insert, Year

S2105/ ... (ID-FA ...)

Material.: 1.4021 / 50 - 55 HRc

pentru inelele de data S2101
used with date ring S2101

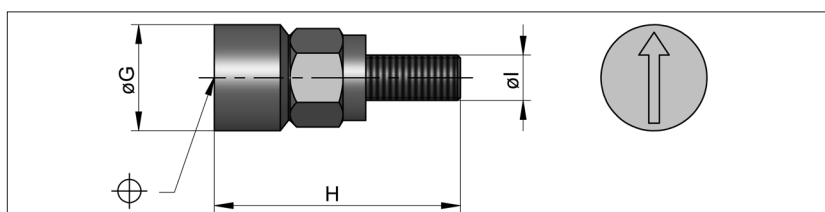
A S2101	G	H	I	Nr. / No.
6	3,8	10	M2,5	S2105/ 6
8	5	12	M3	8
10	6	14	M4	10
12	7			12
16	9			16

Insertie sageata

Arrow Insert

S2106/ ... (ID-F ...)

Material.: 1.4021 / 50 - 55 HRc

pentru inelele de data S2101 si S2103
used with date ring S2101 and S2103

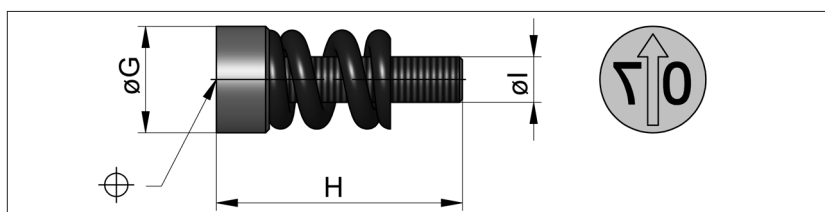
A S2101/S2103	G	H	I	Nr. / No.
6	3,8	10	M2,5	S2106/ 6
8	5	12	M3	8
10	6	14	M4	10
12	7			12
16	9			16

Insertie sageata, An

Arrow Insert, Year

S2115/ ...

Material: 1.4021 / 50 - 55 HRc

pentru inelele de data S2110
used for date ring S2110

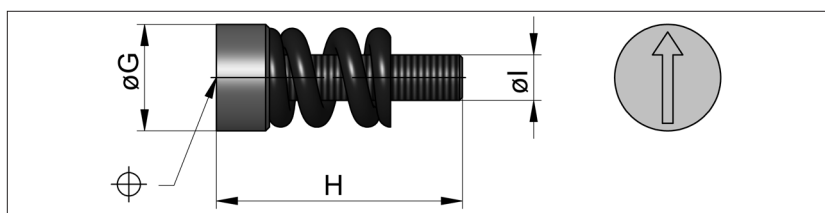
A S2110	G	H	I	Nr. / No.
10	6	14	M3x0,35	S2115/ 10
12	7		M4x0,35	12
16	9			16

Insertie sageata

Arrow Insert

S2116/ ... (ID-FG ...)

Material: 1.4021 / 50 - 55 HRc

pentru inelele de data S2110
used for date ring S2110

A S2110	G	H	I	Nr. / No.
10	6	14	M3x0,35	S2116/ 10
12	7		M4x0,35	12
16	9			16