

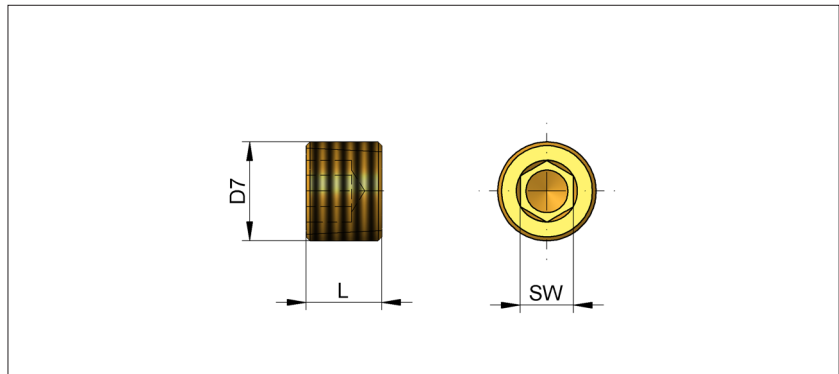
Dop cu cavitate hexagonală, cu filet cilindric

S3531/ ...

Material: 2.0401 (Alama)

Hexagon Socket Pipe Plug, with Cylindrical Thread

Material: 2.0401 (Brass)



L	SW	D7	Nr. / No.
8	4	M8x0,75	S3531/ M8
	5	M10x1	M10
		1/8" BSP	1/8
10	6	M12x1,5	M12
	7	1/4" BSP	1/4
		M14x1,5	M14
	8	3/8" BSP	3/8
	10	1/2" BSP	1/2

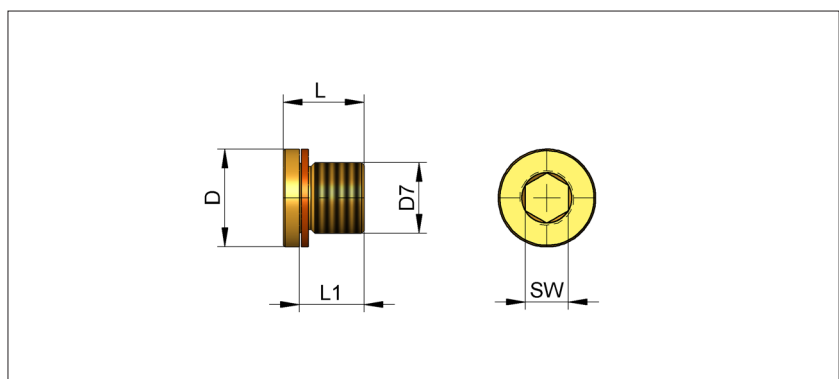
Dop cu cavitate hexagonală cu cap

S3535/ ...

Material: 2.0401 (Alama)

Hexagon Socket Pipe Plug, Headed

Material: 2.0401 (Brass)



L	L1	SW	D	D7	Nr. / No.
11	8	5	14	M10x1	S3535/ M10
				G1/8	1/8
15	12	6	17	M12x1,5	M12
				G1/4	1/4
				M14x1,5	M14
18	14	8	22	G3/8	3/8
				10	26