

**Insertie matrita,  
rotund**

Pentru S6415

**S6416/ ... (CAP2MM- ...)**

Material: 1.3343 / 60 - 62HRc

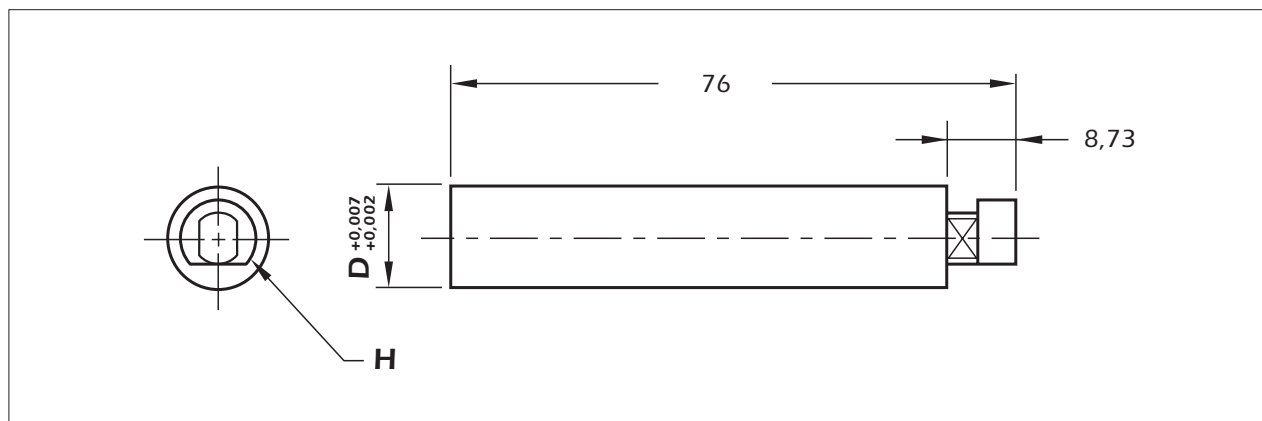
Suprafata: cromat

**Mould Insert,  
round**

For S6415

Material: 1.3343 / 60 - 62HRc

Surface: Chrome plated



D	H	pentru/for S6415	Nr. / No.
13	9,5	X	S6416/ 13x76

**Insertie matrita,  
patrat**

Pentru S6415

**S6417/ ... (CSE2MM- ...)**

Material: 1.2311, pre-calit

Duritate: 66 - 68 HRc

Strat: Nitrurat

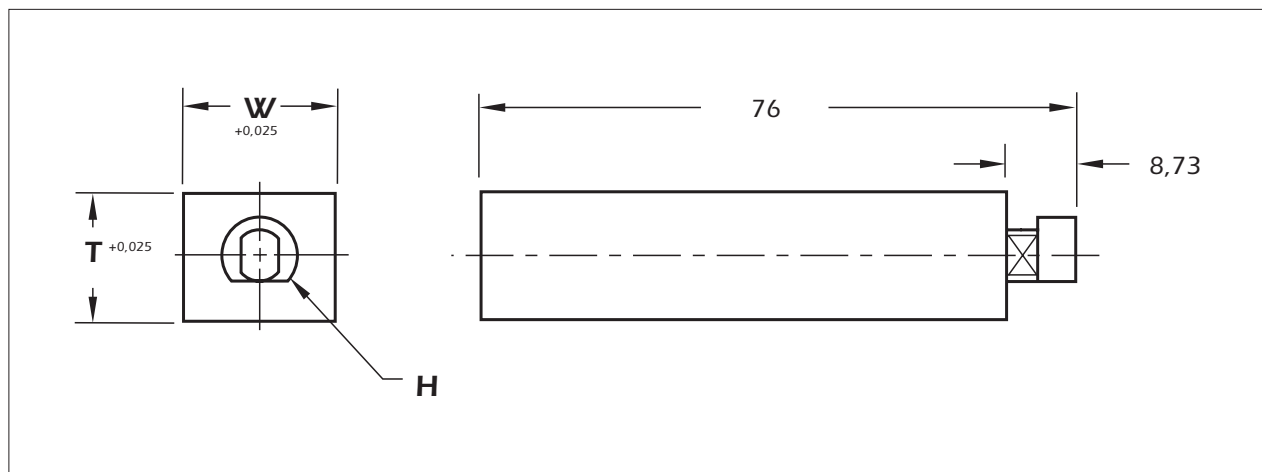
**Mould Insert,  
square**

For S6415

Material: 1.2311, pre-hardened

Hardness: 66 - 68 HRc

Surface: Salt bath nitrided



T	W	H	pentru/for S6415	Nr. / No.
16	19	9,5	X	S6417/ 16x19x76