

**Insertie matrita,
rotund**

Pentru S6420

S6421/ ... (CAP3MM- ...)

Material: 1.3343 / 60 - 62HRc
Suprafata: cromat

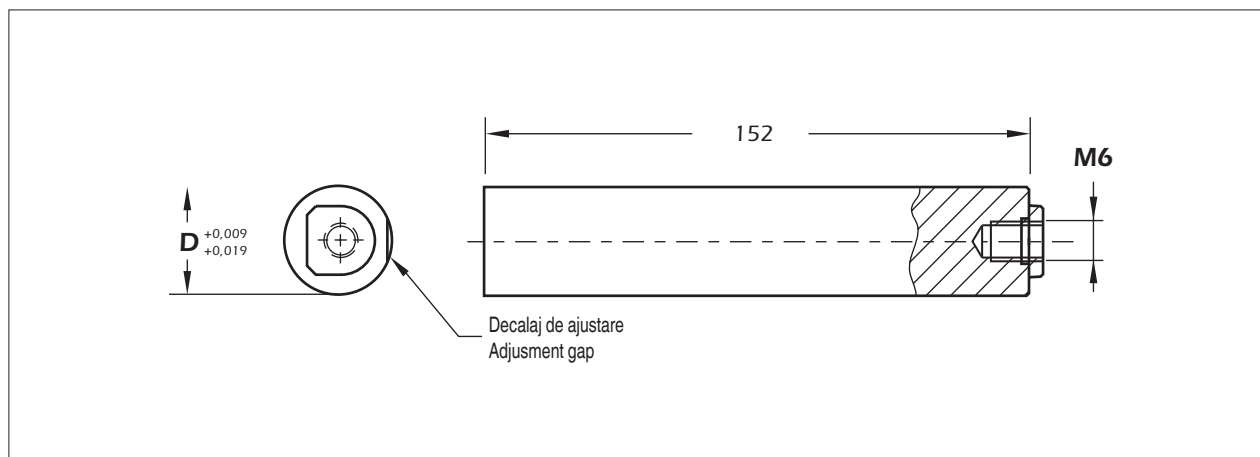
Surubul este inclus in pachet..

**Mould Insert,
round**

For S6420

Material: 1.3343 / 60 - 62HRc
Surface: Chrome plated

Screw is included in delivery.



D	pentru/for S6420	Nr. / No.
19	X	S6421/ 19x152

**Insertie matrita,
patrat**

Pentru S6420

S6422/ ... (CSE3MM- ...)

Material: 1.2311, pre-calit
Duritate: 64 - 68HRc
Suprafata: Niturat

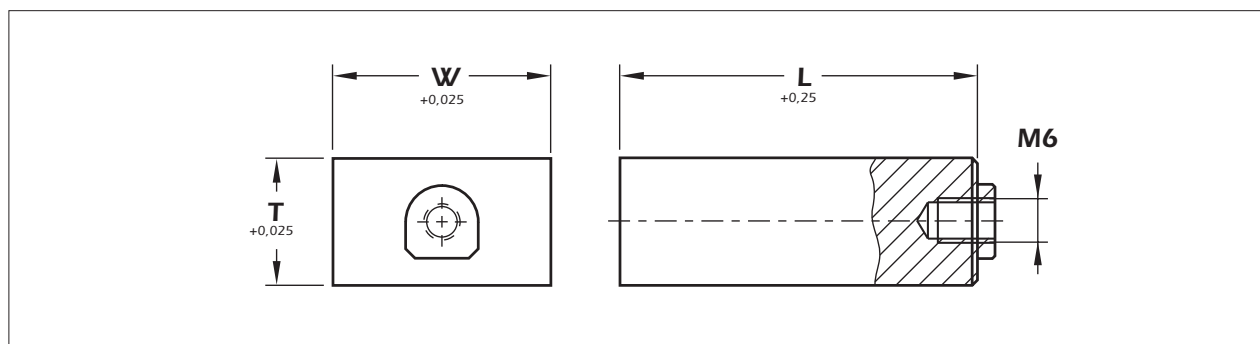
Surubul este inclus in pachet.

**Mould Insert,
square**

For S6420

Material: 1.2311, pre-hardened
Hardness: 64 - 68HRc
Surface: Salt bath nitrided

Screw is included in delivery.



T	W	pentru/for S6420	L	Nr. / No.
22	38	X	12	S6422/ 22x38x12
		X	50	22x38x50